



**1. Product Name**

Sectional Garage Doors and Openers

- Woodline™ & Ranch™
- Hi-Tensil™
- Camelot™
- Steel Carriage House
- Carriage House Aluminum
- Copper
- Surrey Collection
- Flushline
- Montana™
- SP & SL Supersteel™
- Silver Door™

**2. Manufacturer**

Martin Door Manufacturing  
2828 S 900 W  
Salt Lake City, UT 84119  
(800) 388-9310  
(801) 973-9310  
Fax: (801) 977-4222  
E-mail: architect@martindoor.com  
www.martindoor.com

**3. Product Description**

**BASIC USE**

A family-owned company in business since 1936, Martin Door manufactures steel, aluminum and copper sectional overhead doors. The company also manufactures among the quietest belt-drive garage door openers available.

**BENEFITS**

- Martin is the only garage door company in the world that offers the UL approved option on every electric garage door system they manufacture
- Martin garage doors offer 20 advanced safety features protecting children and adults
- With the purchase of a Martin Door and Opener, 3 mounting options are available: center, off-center or side mounted
- Most Martin Door models offer over 70 colors and over 60 window styles to choose from
- Optional high-wind load ratings can be specified up to hurricane forces



Martin Ranch model door with bronze metallic powder coat finish

**COMPOSITION & MATERIALS**

**Door Section Assembly**

- Steel - Hot dip galvanized, structural quality carbon steel sheets complying with ASTM A653, commercial quality
- Copper - Structural quality AGSC copper complying with ASTM B370, commercial quality
- Aluminum - Including carriage house and commercial designs. Door sections are manufactured from heavy-etch commercial, powder coated aluminum per ASTM B221, 6063-T6 alloy

**Insulation Styles**

**Series II - Steel-Back Insulation (S)**

- Highest wind load rating - 110 mph (177 kph)
- Heavy gauge 26 gauge continuous white steel backing
- Fully insulated 2" (51 mm) thick door panel construction

**Series 1 - Standard insulation with 30 gauge steel back (I)**

- Wind load rating - 95 mph (153 kph)
- Fully insulated 2" (51 mm) thick door panel construction
- Light gauge steel back panel
- Two coats of premium baked-on enamel finish

**Regular - Non-insulated (R)**

- Wind load rating - 85 mph (137 kph)
- 2" (51 mm) thick door panel construction
- Two coats of premium baked-on enamel finish

**TYPES & SIZES**

**Woodline™ & Ranch™**

This versatile line offers an extensive selection of design possibilities. Choose the insulation style, door color, design (Woodline - short panel, or Ranch - long panel) and optional window style. Sizes include:

- 8' 2" - 10' 2" (2.5 - 3.1 m)
- 12' 2" - 15' 2" (3.7 - 4.6 m)
- 16' 2" - 24' 2" (4.9 - 7.4 m)

**Designer Windows**

A variety of beautiful choices is available. Use acrylite instead of glass for safety and durability. Martin Doors' Vista™ window line is a separate offering featuring bevels, textures and coming choices.

**Accessories**

- Vents - Available in white or brown
- Mail slots - Available in brass or brushed aluminum

**Hi-Tensil™**

Gives the appearance of a ribbed door in a working sectional door. These doors share features with Woodline and Ranch garage doors.

**Camelot™**

These doors provide the flexibility to include mixed panel sizes (Short - S, or Long - L) on the same door. Camelot doors also share features with Woodline and Ranch garage doors. Camelot panel styles include:

- 8' 2" - 10' 2" (2.5 - 3.1 m) - SLS
- 12' 2" - 15' 2" (3.7 - 4.6 m) - SLLS, LSSL, SSLSS



Martin Flushline model door with Rusty Iron powder coat finish

- 16' 2" - 24' 2" (4.9 - 7.4 m) - SLSSLS, LSSSSL, SSLSS, LSLS, SLLLS

**Steel Carriage House**

Steel or copper carriage house doors add curb appeal, while offering the advantages of high quality and safety. Add windows and Martin Doors' old-world style hinges and handles for a carriage house look.

**Carriage House Aluminum**

With unique carriage house designs and deep rail definition, these doors are made of strong, maintenance-free, extruded aluminum instead of wood. For security, they include a window choice in clear acrylic or solid aluminum pane. Arched windows are extra. All doors are powder coated. Antique hinges and handles are available in black or silver.

**Copper**

These beautiful doors offer a rare, distinctive look found only on the most prestigious properties. Made of real copper, the doors in time will develop a patina finish. For beauty and protection, they feature a premier powder coating on the track and hardware components and are available in Woodline, Ranch, Flushline, Camelot or Hi-Tensil finishes. Series I and Series II insulation is available.

**Flushline™**

These doors offer a clean look that complements both classic and modern homes. Flushline doors share features with the Series II and Series I doors.

**Montana™**

- 26 gauge steel sections (long panel design only)
- Available in limited sizes, including heights of 7 and 8' (2.1 and 2.4 m) and widths of 8' 2", 9' 2", 15' 2" and 16' 2" - (2.5, 2.8, 4.6 and 4.9 m)
- Insulation - Choice of Regular (non-insulated), Series I (standard insulation) or Series II Steel-Back Insulation

**SP & SL Supersteel™**

For added strength and durability, Super Steel short and long panel doors feature 24 gauge high tensil steel. Available sizes: 8' 2", 9' 2", 15' 2", 16' 2" and 18' 2" (2.5, 2.8, 4.6, 4.9 and 5.5 m) wide and up to 8' 3" (2.5 m) high.

**Silver Door™**

This aluminum door is available in sizes up to 20' 2" (6.2 m) wide and from 7' - 20' (2.2 - 6.1 m) high.

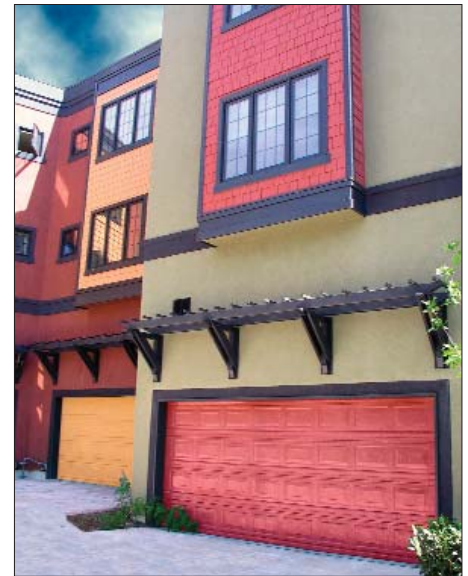
**COLOR & FINISH**

In addition to being hot dip galvanized, every steel Martin Door is painted with 2 coats of high quality baked-on enamel and is embossed with a beautiful woodgrain texture. Available door colors vary by product. Standard colors include:

- Woodline and Ranch - Light almond, white mist, adobe stone, dark brown, desert taupe
- Hi-Tensil - Light almond, white mist, adobe stone, dark brown, desert taupe
- Camelot - Light almond, white mist, adobe stone, dark brown, desert taupe
- Steel Carriage House - Light almond, white mist, adobe stone, dark brown, desert taupe
- Carriage House Aluminum - Choose from over 70 powder colors including metallic, vein and a few wood stain colors
- Copper - Copper color develops a patina finish over time
- Flushline - Light almond, white mist, adobe stone, dark brown, desert taupe
- Montana - White mist or light almond
- SP & SL Supersteel - Light almond, white mist, adobe stone, dark brown, desert taupe
- Silver Door - Over 70 powder coat color choices

**Powder Coat Colors**

Powder coat finish is the highest quality paint system available. It is available, at an upcharge, on front of Series II and Series I and on selected door hardware. There are over 70



Woodline model door, Martin steel door available in over 60 custom powder coat finishes

powder coat colors including RAL, metallics, veins and wood stain colors.

**SAFETY FEATURES**

- Finger Shield™ - Designed to help protect fingers from section joint injury. All Martin aluminum doors include the Finger Shield Joint
- Safety Hinge - This low profile hinge reduces the gap between sections in the back of the door
- Reverse Angle Shield - Shields large gaps between the track and the wall to help protect arms and hands from serious injury
- Safety Track - Sharp edges are rounded and large holes are eliminated to protect fingers
- Rollershield™ - Moving rollers are shielded to prevent fingers from being injured in the track
- Controlled Descent Device - Stops the door from falling in case of a relaxed spring, broken spring or broken lift cable. The device attaches to the outside of the lock-on side bearing bracket
- Foam Bottom Weatherseal - A standard 1" (25.4 mm), or optional 3" (76 mm), seal fastened to the door bottom and held in place by a full door width reinforcing steel galvanized angle
- Curve Shield - Included on all residential doors up to 8' (2.4 m) high. Keeps hands and fingers away from a moving door. It will mount easily onto the reverse angle shield using existing holes in the shield



Martin Ranch model door with Amore<sup>®</sup> Vista windows

**HARDWARE**

- Premium Rollers with Rollershield - Lifetime 11 ball-bearing rollers (except Montana); no maintenance, with sealed bearings
- Galvanized Springs - Resists rust and breakage; backed by a lifetime warranty; rated to over 30,000 cycles on doors up to 9' (2.7 m) high; SL and SP Supersteel rated to 20,000 cycles on standard springs; and Montana rated to 12,000 cycles on standard springs
- Safety Lock-On Bottom Bracket - Galvanized bottom bracket locks to the bottom of the door when cable is under tension. Bracket cannot be removed while spring is under tension. Lift cable is locked to the bottom bracket
- Safety Track - Sharp edges are rounded and large holes are eliminated to protect fingers
- Heavy-Gauge Hinges - 14 gauge galvanized steel hinges; reduces gap between door sections; protects fingers from injury
- Heavy-Grade Cables - Rated to 2000 lb (907 kg) lifting capacity; lifetime, commercial grade 1/8 inch (3.2 mm) 14 gauge lift cables (optional stainless steel); heavy duty loop reinforcement
- Heavy 24 Gauge Steel - 24 gauge, hot-dipped galvanized steel sections; 2 coats baked-on gloss enamel finish
- 7 Layers of Protection - Optional powder coat paint; baked-on enamel paint; first coat enamel paint; hot dip galvanizing;

- heavy 24 gauge steel; hot dip galvanizing; first coat enamel paint; baked-on enamel paint
- Antique Hinge Kits - Include 4 hinges, 2 handles and screws

**RESIDENTIAL DOOR OPENERS**

**DC3700e - Ultra-Quiet Belt-Drive**

- 1/2 hp
- Two transmitters
- Deluxe Wall Console - Illuminated buttons, vacation lock, light switch
- Exclusive Learn-Force System (automatically adjusts sensitivity)
- Lifetime warranty

**DC2500e - Quiet Belt-Drive**

- 1/2 hp
- One transmitter
- Wall button
- Exclusive Learn-Force System (automatically adjusts sensitivity)
- 15 year warranty

**Door Accessories**

- Wireless keyless entry
- Additional transmitters available with 2 or 4 buttons
- Three-button key chain transmitter
- PowerReserve™ battery backup - Operates any DC powered opener and light 10 - 15 times when the power goes out (2 year product warranty). It features a 125 degree F (52 degrees C) maximum and -20 degree F (-29 degrees C) minimum operating temperature

Note - DC3700e and DC2500e can be ordered with white powder coat hardware, including the steel channel rail and most of the steel hardware.

**4. Technical Data**

**APPLICABLE STANDARDS**

**ASTM International**

- ASTM A653/A653M Standard Specification for Steel Sheet, Zinc-Coated (Galvanized) or Zinc-Iron Alloy-Coated (Galvannealed) by the Hot-Dip Process
- ASTM B117 Standard Practice for Operating Salt Spray (Fog) Apparatus
- ASTM B221 Standard Specification for Aluminum and Aluminum-Alloy Extruded Bars, Rods, Wire, Profiles, and Tubes
- ASTM B370 Standard Specification for Copper Sheet and Strip for Building Construction
- ASTM D3363 Standard Test Method for Film Hardness by Pencil Test
- ASTM E84 Standard Test Method for Surface Burning Characteristics of Building Materials
- ASTM G53 Standard Practice for Operating Light- and Water-Exposure Apparatus (Fluorescent UV Condensation Type) for Exposure of Nonmetallic Materials
- ASTM G154 Standard Practice for Operating Fluorescent Light Apparatus for UV Exposure of Nonmetallic Materials

Uniform Building Code (UBC) - UBC 26-8 Room Fire Test Standard for Garage Doors Using Foam Plastic Insulation

**ENVIRONMENTAL CONSIDERATIONS**

Martin Door's high-tech powder coat paint line, available in over 70 color options, is produced using an environmentally safe in-house production process. Prior to powder application, parts are washed in a high-tech system that monitors the acidic level of the water. The runoff is tested for pH levels and is not released until it reaches appropriate levels. Holding bays under the floor contain the water, where it is stirred. Alarms and safety valves prevent any discharge of unwanted, untreated water.

Martin Door Manufacturing is considered a green manufacturer. Rather than cutting down trees and forests, doors are made from steel, copper and aluminum in wood grain patterns with a large selection of finishes that include wood stain colors. Recycled materials are used within the doors and within the polystyrene insulation, which can be removed and recycled to limit landfill waste.



High energy efficiency should be limited to the conditioned parts of the home. Martin Door Manufacturing, strongly advises against sealing a garage and garage door because of potential carbon monoxide poisoning and potential risk of explosion ignited from noxious fume.

**PHYSICAL/CHEMICAL PROPERTIES**

- Salt Spray Rust Test (ASTM B117) - Passed
- 164 hour UV exposure (ASTM G53) - Passed
- Hardness (ASTM D3363) - Passed (2H minimum)
- Surface burning characteristics of insulation (ASTM E84) - Flamespread, 75; smoke developed, 450
- Rigid cellular polystyrene (UBC 26-8) - Pass
- Steel door section - Minimum yield strength of 33,000 psi (227 MPa)

**5. Installation**

**PREPARATORY WORK**

Deliver products in manufacturer's original, unopened, undamaged containers with identification labels intact. Store materials protected from exposure to harmful environmental conditions and at temperature and humidity conditions recommended by the manufacturer.

Verify that site conditions are acceptable for installation. Do not proceed with installation until unacceptable conditions are corrected. Only authorized representatives of Martin Door Manufacturing shall perform installation of sectional doors.

**METHODS**

Install door, track and operating equipment complete with necessary hardware, anchors, inserts, hangers, equipment supports, safety labels and safety devices, if provided, according to shop drawings, Martin Door's written instructions and as specified.

Fasten vertical track assembly to framing at not less than 24" (610 mm) height increments. Hang horizontal track from structural overhead framing with steel punched angle welded or bolt-fastened in place. Provide sway bracing, diagonal bracing and reinforcement as required for rigid installation of track and door-operating equipment.

**BUILDING CODES**

Installation must comply with the requirements of all applicable local, state and federal code jurisdictions.



**6. Availability & Cost**

**AVAILABILITY**

Products are available from certified distributors. Contact manufacturer for information on local availability.

**COST**

Budget installed cost information may be obtained from the manufacturer.

**7. Warranty**

The Martin warranty is to the original owner. Most residential doors carry a lifetime limited warranty (12 year limited on Montana). Commercial rental doors are covered by a 6 year limited warranty. Replacement part shipping and labor costs are not included. Springs have life cycle limits. Contact a Martin Door Manufacturing dealer for full written warranty limitations.

**8. Maintenance**

For maintenance and cleaning recommendations, contact a Martin Door Manufacturing dealer or download an owner's manual from the Martin Door Manufacturing website, [www.martindoor.com](http://www.martindoor.com).

**9. Technical Services**

FloMax™, a manufacturing management system, allows Martin Door to manufacture and ship any size, color or configuration of a garage door in 48 hours. This system also eliminates mistakes with checks and balances.

**10. Filing Systems**

- MANU-SPEC®
- First Source CAD
- Additional product information is available from the manufacturer upon request.